

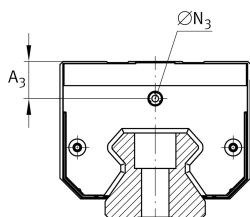
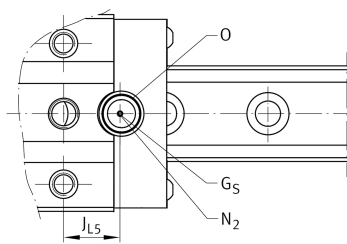
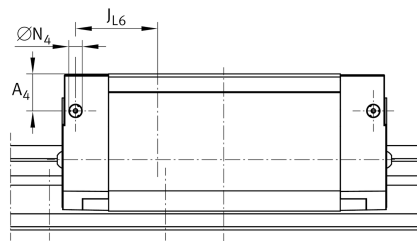
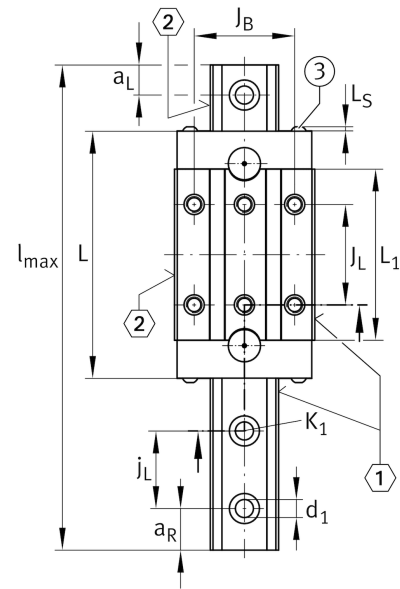
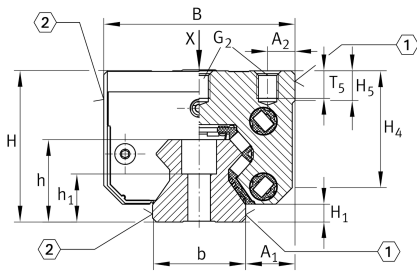
RUE55-F-HL

滚子单轨引导系统

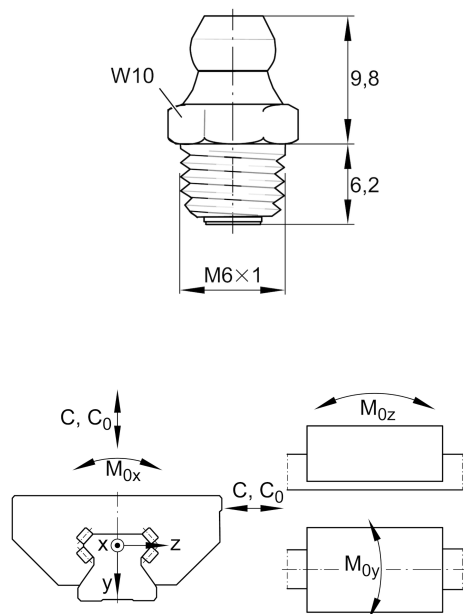
满装循环滚珠系统的高窄长滑块，用于直线循环滚珠轴承和导轨组件，用于润滑油和脂润滑

技术信息

安装尺寸



A ₁	[23.5] mm	
J _B	[75] mm	
b	[53] mm	width rail
Tol _b	[-0.005] mm	Upper tolerance
Tol _b	[-0.035] mm	Lower tolerance
A ₂	[12.5] mm	
L ₁	[165] mm	
J _L	[95] mm	
j _L	[60] mm	
a _{L min}	[20] mm	
a _{L max}	[47] mm	
a _{R min}	[20] mm	Distance
a _{R max}	[47] mm	
H ₁	[11] mm	
H ₄	[61.4] mm	
H ₅	[16] mm	
T ₅	[15] mm	
h	[45] mm	
h ₁	[22.5] mm	
Tol h ₁	[0.5] mm	Upper tolerance
Tol h ₁	[-0.5] mm	Lower tolerance
G ₂	[M12]	fixing screws
G _{2 MA}	[140] Nm	maximum tightening torque
K ₁	[M14]	fixing screws
K _{1 MA}	[220] Nm	maximum tightening torque
d ₁	[12.5] mm	
A ₃	[18.1] mm	position lubrication adapter
N ₃	[M6]	lubrication connector
A ₄	[18.1] mm	position lubrication connector
N ₄	[M6]	lubrication connector
J _{L6}	[51.9] mm	position lubrication connector
N _{2 max}	[6] mm	
J _{L5}	[40.6] mm	
G ₅	[M4x4]	
O	[10x1,5]	O-Ring DIN 3771



Main dimensions

l_{\max}	[5,880] mm	Max length single piece guideway
H	[80] mm	height system
B	[100] mm	width carriage
L	[210.7] mm	overall length carriage

Technical data

C	[167,000] N	dynamic load rating
C_0	[415,000] N	static load rating
M_{0x}	[4,226] Nm	static moment rating about X axis
M_{0y}	[12,214] Nm	static moment rating about Y axis
M_{0z}	[11,010] Nm	static moment rating about Z axis

Related products

[RWU55-F_HL]	Carriage
[TSX55-E]	Guideway