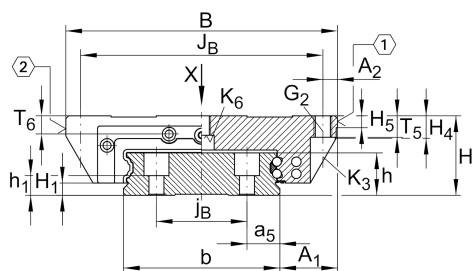


## KUVE35-WL

球单轨引导系统

滑块 KWVE..-WL, 用于直线循环滚珠轴承和导轨组件的宽长型滑块

### 技术信息

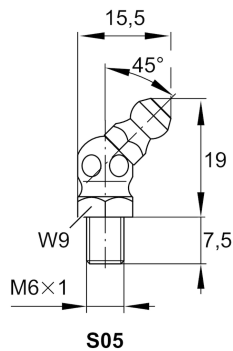
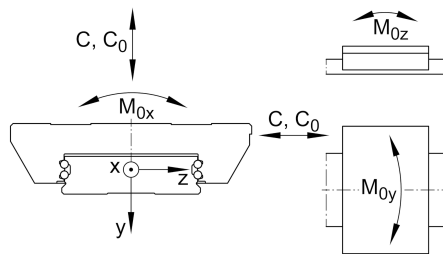
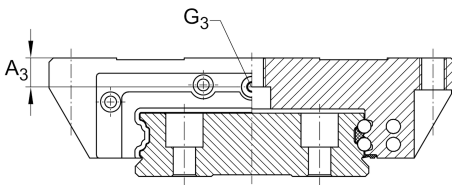
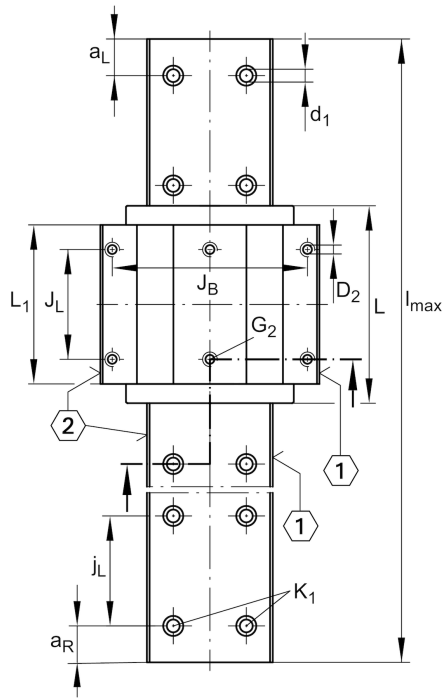


### Main dimensions

$l_{max}$	[5,860] mm	Max length single piece guideway
H	[50] mm	height system
B	[162] mm	width carriage
L	[140.2] mm	overall length carriage

### 安装尺寸

C	[47,500] N	dynamic load rating
$C_0$	[100,000] N	static load rating
$M_{0x}$	[5,550] Nm	static moment rating about X axis
$M_{0y}$	[1,890] Nm	static moment rating about Y axis
$M_{0z}$	[1,890] Nm	static moment rating about Z axis



## 安装尺寸

$A_1$	[36] mm	
$J_B$	[144] mm	
$j_B$	[60] mm	
$b$	[90] mm	width rail
$a_5$	[15] mm	
$A_2$	[9] mm	
$L_1$	[109.8] mm	
$J_L$	[80] mm	
$j_L$	[80] mm	
$a_{L\min}$	[20] mm	
$a_{L\max}$	[71] mm	
$a_{R\min}$	[20] mm	
$a_{R\max}$	[71] mm	
$H_1$	[6.8] mm	
$H_4$	[16.3] mm	
$H_5$	[6.5] mm	
$T_5$	[13] mm	
$T_6$	[13] mm	
$h$	[27] mm	
$h_1$	[14.5] mm	
$G_2$	[M10]	fixing screws
$G_{2MA}$	[41] Nm	maximum tightening torque
$K_1$	[M8]	fixing screws
$K_{1MA}$	[41] Nm	maximum tightening torque
$K_3$	[M8]	fixing screws
$K_{3MA}$	[41] Nm	maximum tightening torque
$K_6$	[M8]	fixing screws
$K_{6MA}$	[41] Nm	maximum tightening torque
$d_1$	[9] mm	
$D_2$	[8.6] mm	
$A_3$	[14.3] mm	
$G_3$	[M6] mm	
$t_{G_3}$	[6] mm	

## Related products

[KWVE35-WL]	Carriage
[TKVD35-W]	suitable Guide Rail