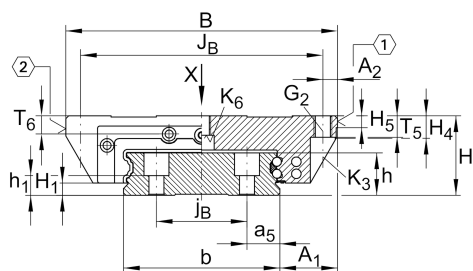


## KUVE20-W

球单轨引导系统

滑块 KWVE..-W, 用于直线循环滚珠轴承和导轨组件的宽滑块

### 技术信息

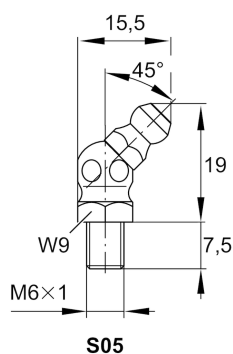
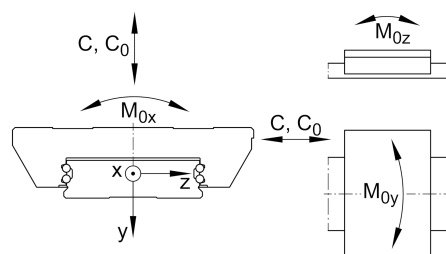
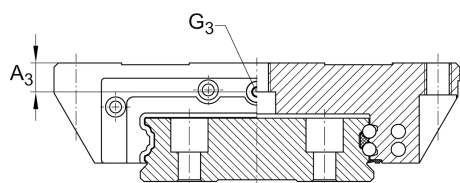
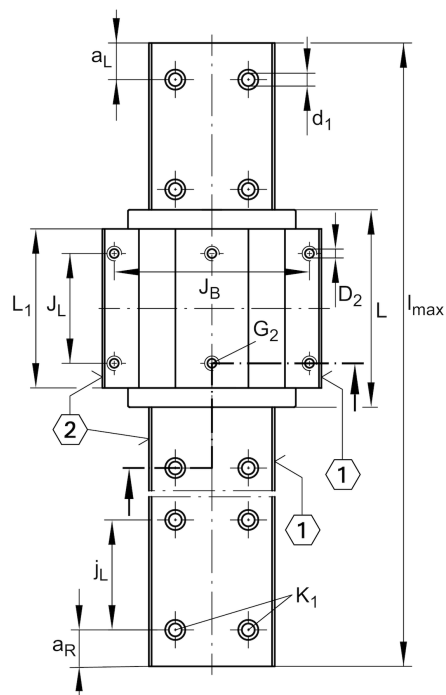


### Main dimensions

$l_{max}$	[2,880] mm	Max length single piece guideway
H	[27] mm	height system
B	[80] mm	width carriage
L	[69.8] mm	overall length carriage

### 安装尺寸

C	[13,100] N	dynamic load rating
$C_0$	[27,000] N	static load rating
$M_{0x}$	[687] Nm	static moment rating about X axis
$M_{0y}$	[240] Nm	static moment rating about Y axis
$M_{0z}$	[240] Nm	static moment rating about Z axis



## 安装尺寸

$A_1$	[19] mm	
$J_B$	[70] mm	
$j_B$	[24] mm	
$b$	[42] mm	width rail
$a_5$	[9] mm	
$A_2$	[5] mm	
$L_1$	[50.4] mm	
$J_L$	[40] mm	
$j_L$	[60] mm	
$a_{L\min}$	[20] mm	
$a_{L\max}$	[53] mm	
$a_{R\min}$	[20] mm	
$a_{R\max}$	[53] mm	
$H_1$	[4.6] mm	
$H_4$	[10.6] mm	
$H_5$	[5] mm	
$T_5$	[10] mm	
$T_6$	[6] mm	
$h$	[17] mm	
$h_1$	[10] mm	
$G_2$	[M6]	fixing screws
$G_{2MA}$	[10] Nm	maximum tightening torque
$K_1$	[M4]	fixing screws
$K_{1MA}$	[5] Nm	maximum tightening torque
$K_3$	[M5]	fixing screws
$K_{3MA}$	[10] Nm	maximum tightening torque
$K_6$	[M5]	fixing screws
$K_{6MA}$	[4] Nm	maximum tightening torque
$d_1$	[4.6] mm	
$D_2$	[5.5] mm	
$A_3$	[5] mm	
$G_3$	[M5] mm	
$t_{G_3}$	[5] mm	

## Related products

[KWVE20-W]	Carriage
[TKVD20-W]	suitable Guide Rail