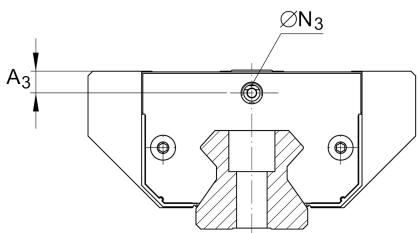
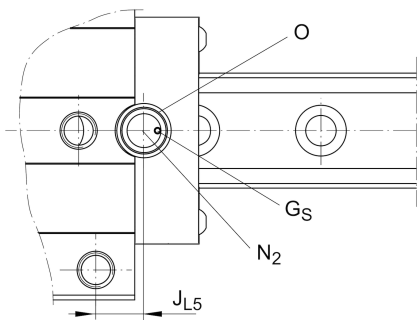
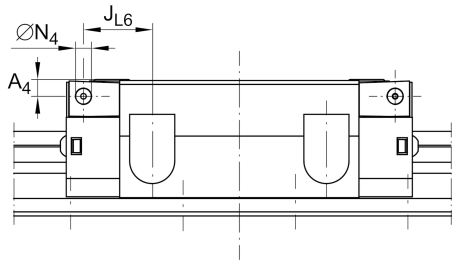
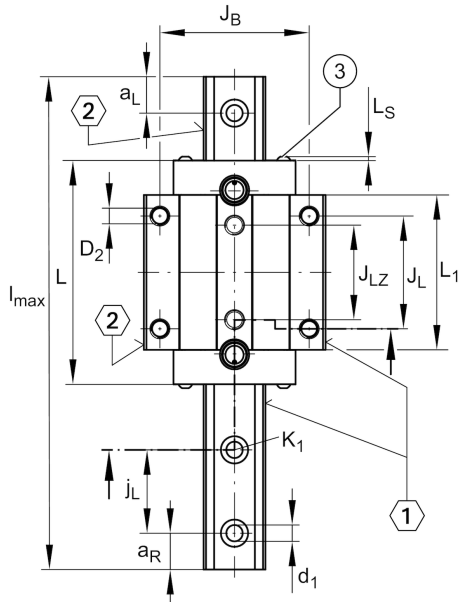
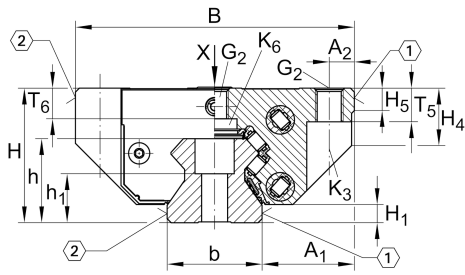


RUE100-E-L

滚子单轨引导系统

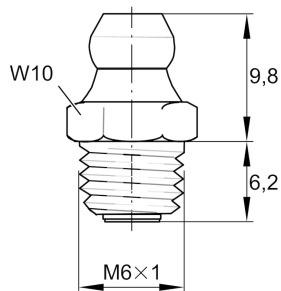
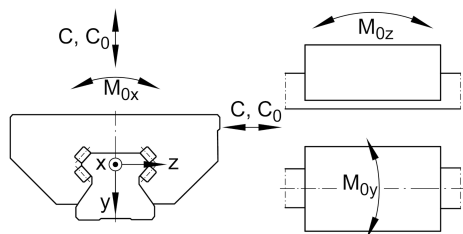
直线循环滚珠轴承和导轨组件，带有满装循环滚珠系统的长滑块，油润滑或脂润滑

技术信息



安装尺寸

A ₁	[75] mm	
J _B	[200] mm	
b	[100] mm	width rail
Tol _b	[-0.005] mm	Upper tolerance
Tol _b	[-0.035] mm	Lower tolerance
A ₂	[25] mm	
L ₁	[306.5] mm	
J _L	[230] mm	
j _L	[105] mm	
a _{L min}	[30] mm	
a _{L max}	[83] mm	
a _{R min}	[30] mm	Distance
a _{R max}	[83] mm	
H ₁	[15] mm	
H ₄	[52.5] mm	
H ₅	[25] mm	
T ₅	[29] mm	
T ₆	[26.6] mm	
h	[80] mm	
h ₁	[48] mm	
Tol h ₁	[0.5] mm	Upper tolerance
Tol h ₁	[-0.5] mm	Lower tolerance
G ₂	[M20]	fixing screws
G _{2MA}	[470] Nm	maximum tightening torque
K _{1MA}	[340] Nm	maximum tightening torque
K ₃	[M16]	fixing screws
K _{3MA}	[340] Nm	maximum tightening torque
K ₆	[M14]	fixing screws
K _{6MA}	[220] Nm	maximum tightening torque
d ₁	[17.5] mm	
D ₂	[17.5] mm	
A ₃	[10.6] mm	position lubrication adapter
N ₃	[M6]	lubrication connector
J _{L6}	[65.1] mm	position lubrication connector
N _{2 max}	[6] mm	
J _{L5}	[47.15] mm	
G _S	[M4x4]	
O	[10x1,5]	O-Ring DIN 3771



Main dimensions

l_{max}	[2,730] mm	Max length single piece guideway
H	[120] mm	height system
B	[250] mm	width carriage
L	[372.2] mm	overall length carriage

Technical data

C	[630,000] N	dynamic load rating
C_0	[1,490,000] N	static load rating
M_{0x}	[33,780] Nm	static moment rating about X axis
M_{0y}	[80,250] Nm	static moment rating about Y axis
M_{0z}	[72,280] Nm	static moment rating about Z axis

Related products

[RWU100-E-L]	Carriage
[TSX100-E]	Guideway