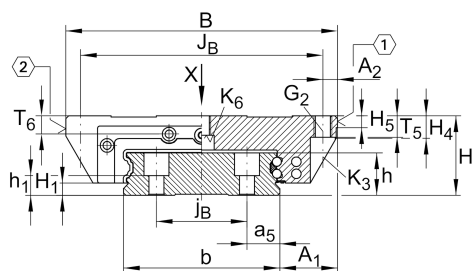


## KUVE15-W

球单轨引导系统

滑块 KWVE..-W, 用于直线循环滚珠轴承和导轨组件的宽滑块

### 技术信息

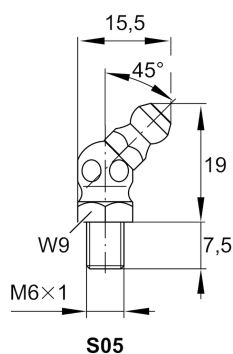
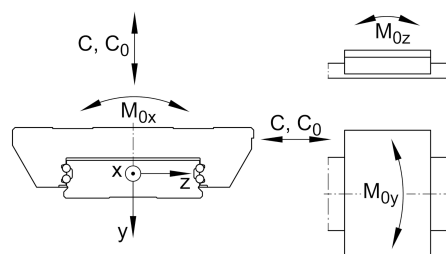
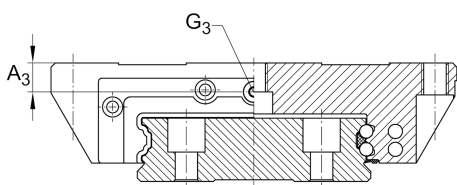
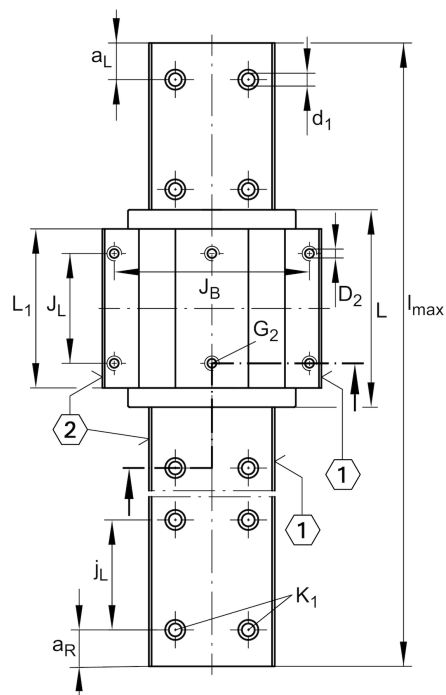


#### Main dimensions

$l_{max}$	[2,890] mm	Max length single piece guideway
H	[21] mm	height system
B	[68] mm	width carriage
L	[55.6] mm	overall length carriage

#### 安装尺寸

C	[7,200] N	dynamic load rating
$C_0$	[14,500] N	static load rating
$M_{0x}$	[332] Nm	static moment rating about X axis
$M_{0y}$	[100] Nm	static moment rating about Y axis
$M_{0z}$	[100] Nm	static moment rating about Z axis



## 安装尺寸

$A_1$	[15.5] mm	
$J_B$	[60] mm	
$j_B$	[22] mm	
$b$	[37] mm	width rail
$a_5$	[7.5] mm	
$A_2$	[4] mm	
$L_1$	[39.8] mm	
$J_L$	[29] mm	
$j_L$	[50] mm	
$a_{L\min}$	[20] mm	
$a_{L\max}$	[44] mm	
$a_{R\min}$	[20] mm	
$a_{R\max}$	[44] mm	
$H_1$	[2.1] mm	
$H_4$	[7.7] mm	
$H_5$	[4.5] mm	
$T_5$	[7] mm	
$T_6$	[4.8] mm	
$h$	[12.9] mm	
$h_1$	[6] mm	
$G_2$	[M5]	fixing screws
$G_{2MA}$	[5.8] Nm	maximum tightening torque
$K_1$	[M4]	fixing screws
$K_{1MA}$	[5] Nm	maximum tightening torque
$K_3$	[M4]	fixing screws
$K_{3MA}$	[5] Nm	maximum tightening torque
$K_6$	[M4]	fixing screws
$K_{6MA}$	[2] Nm	maximum tightening torque
$d_1$	[4.6] mm	
$D_2$	[4.5] mm	
$A_3$	[3.6] mm	
$G_3$	[M3] mm	
$t_{G_3}$	[4] mm	

## Related products

[KWVE15-W]	Carriage
[TKVD15-W]	suitable Guide Rail