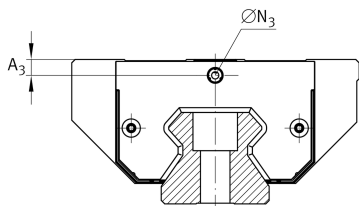
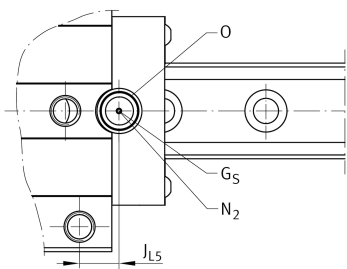
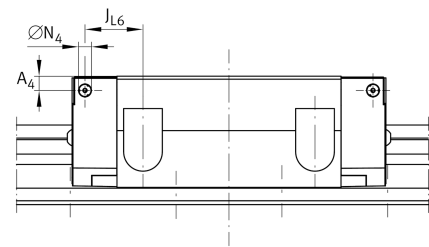
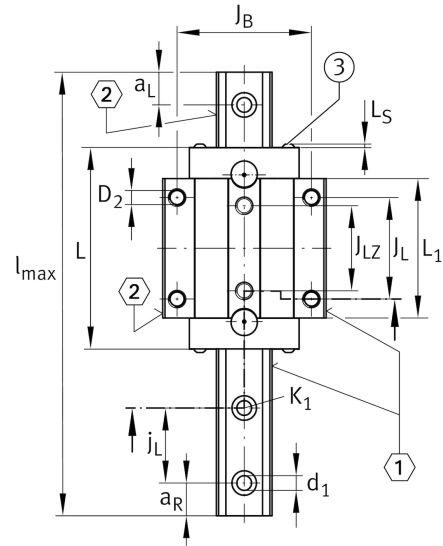
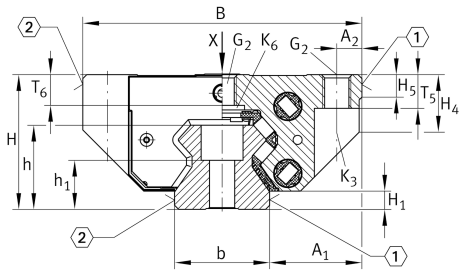


RUE45-F

滚子单轨引导系统

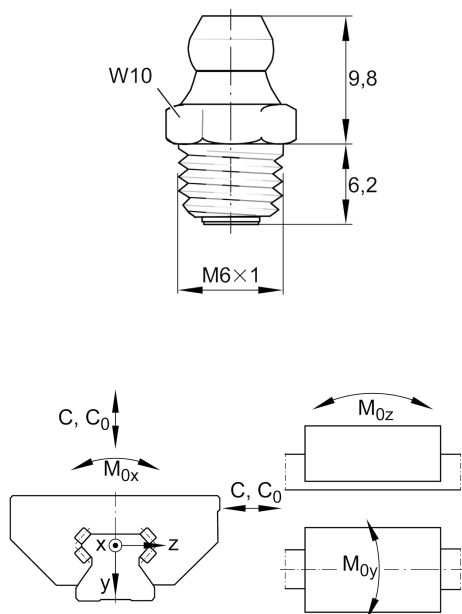
带满装循环滚珠导引系统的标准滑块, 用于直线循环滚珠轴承和导轨组件, 用于油润滑或脂润滑

技术信息



安装尺寸

A ₁	[37.5] mm	
J _B	[100] mm	
b	[45] mm	width rail
Tol _b	[-0.005] mm	Upper tolerance
Tol _b	[-0.035] mm	Lower tolerance
A ₂	[10] mm	
L ₁	[104.2] mm	
J _L	[80] mm	
J _{LZ}	[60] mm	
j _L	[52.5] mm	
a _{L min}	[20] mm	
a _{L max}	[41] mm	
a _{R min}	[20] mm	Distance
a _{R max}	[41] mm	
H ₁	[8.5] mm	
H ₄	[26] mm	
H ₅	[8] mm	
T ₅	[15] mm	
T ₆	[13.2] mm	
h	[38] mm	
h ₁	[19.5] mm	
Tol _{h₁}	[0.5] mm	Upper tolerance
Tol _{h₁}	[-0.5] mm	Lower tolerance
G ₂	[M12]	fixing screws
G _{2MA}	[83] Nm	maximum tightening torque
K ₁	[M12]	fixing screws
K _{1MA}	[140] Nm	maximum tightening torque
K ₃	[M10]	fixing screws
K _{3MA}	[83] Nm	maximum tightening torque
K ₆	[M10]	fixing screws
K _{6MA}	[48] Nm	maximum tightening torque
d ₁	[10.6] mm	
D ₂	[10.6] mm	
A ₃	[6.6] mm	position lubrication adapter
N ₃	[M6]	lubrication connector
A ₄	[6.6] mm	position lubrication connector
N ₄	[M6]	lubrication connector
J _{L6}	[27] mm	position lubrication connector
N _{2max}	[6] mm	
J _{L5}	[15.7] mm	



Main dimensions

l_{\max}	[5,888] mm	Max length single piece guideway
H	[60] mm	height system
B	[120] mm	width carriage
L	[145.9] mm	overall length carriage

Technical data

C	[92,000] N	dynamic load rating
C_0	[215,000] N	static load rating
M_{0x}	[1,899] Nm	static moment rating about X axis
M_{0y}	[4,255] Nm	static moment rating about Y axis
M_{0z}	[3,821] Nm	static moment rating about Z axis

Related products

[RWU45-F]	Carriage
[TSX45-E]	Guideway