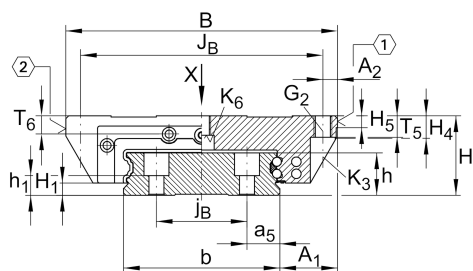


KUVE25-WL

球单轨引导系统

滑块 KWVE..-WL, 用于直线循环滚珠轴承和导轨组件的宽长型滑块

技术信息

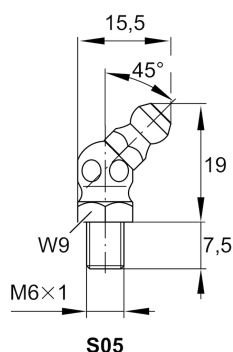
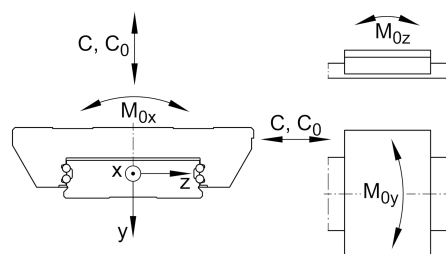
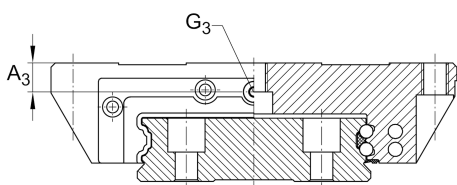
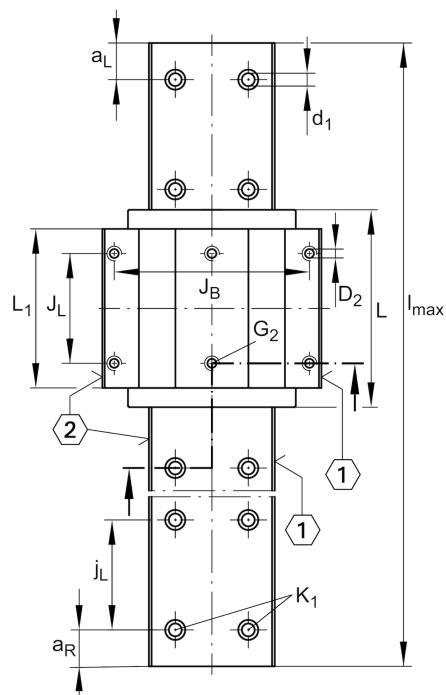


Main dimensions

l_{max}	[5,860] mm	Max length single piece guideway
H	[35] mm	height system
B	[120] mm	width carriage
L	[107.5] mm	overall length carriage

安装尺寸

C	[23,400] N	dynamic load rating
C_0	[54,000] N	static load rating
M_{0x}	[2,225] Nm	static moment rating about X axis
M_{0y}	[825] Nm	static moment rating about Y axis
M_{0z}	[825] Nm	static moment rating about Z axis



安装尺寸

A_1	[25.5] mm	
J_B	[107] mm	
j_B	[40] mm	
b	[69] mm	width rail
a_5	[14.5] mm	
A_2	[6.5] mm	
L_1	[86.5] mm	
J_L	[60] mm	
j_L	[80] mm	
$a_{L\min}$	[20] mm	
$a_{L\max}$	[71] mm	
$a_{R\min}$	[20] mm	
$a_{R\max}$	[71] mm	
H_1	[5.2] mm	
H_4	[9.9] mm	
H_5	[5] mm	
T_5	[10] mm	
T_6	[10] mm	
h	[18.7] mm	
h_1	[8.2] mm	
G_2	[M8]	fixing screws
G_{2MA}	[41] Nm	maximum tightening torque
K_1	[M6]	fixing screws
K_{1MA}	[17] Nm	maximum tightening torque
K_3	[M6]	fixing screws
K_{3MA}	[17] Nm	maximum tightening torque
K_6	[M6]	fixing screws
K_{6MA}	[17] Nm	maximum tightening torque
d_1	[6.8] mm	
D_2	[6.7] mm	
A_3	[10] mm	
G_3	[M6] mm	
t_{G_3}	[6] mm	

Related products

[KWVE25-WL]	Carriage
[TKVD25-W]	suitable Guide Rail