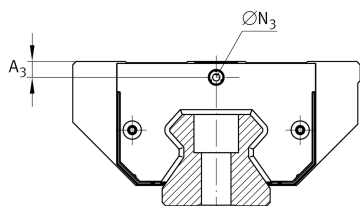
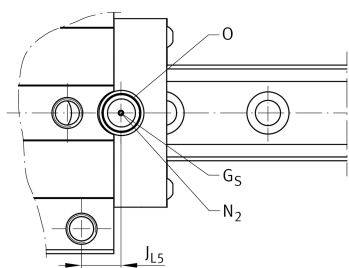
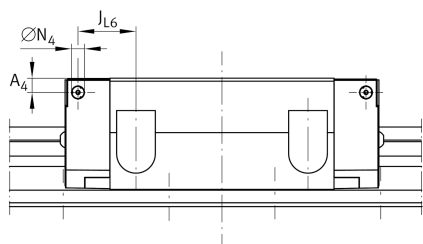
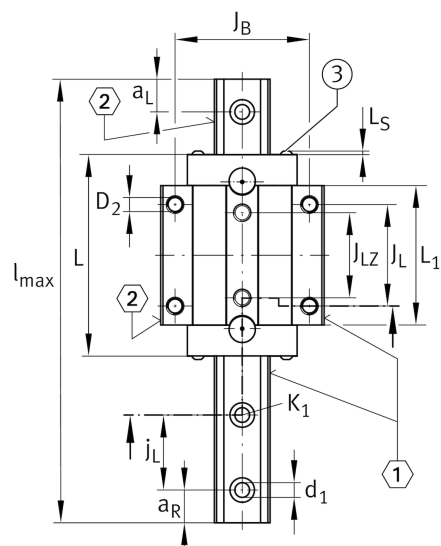
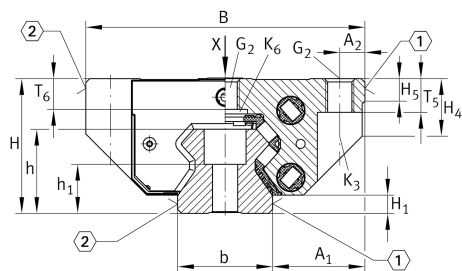


RUE65-F-L

滚子单轨引导系统

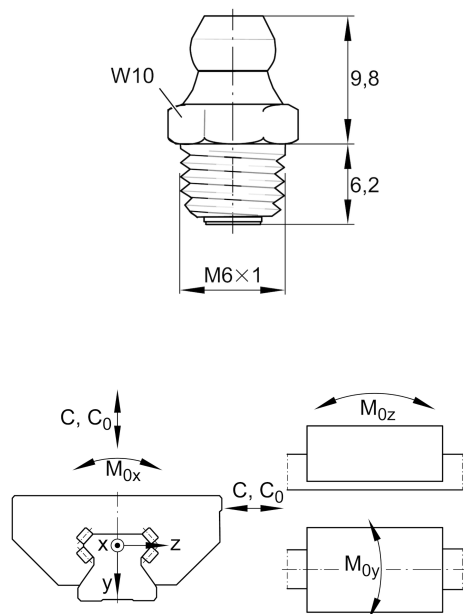
直线循环滚珠轴承和导轨组件，带有满装循环滚珠系统的长滑块，油润滑或脂润滑

技术信息



安装尺寸

A ₁	[53.5] mm	
J _B	[142] mm	
b	[63] mm	width rail
Tol _b	[-0.005] mm	Upper tolerance
Tol _b	[-0.035] mm	Lower tolerance
A ₂	[14] mm	
L ₁	[207.6] mm	
J _L	[110] mm	
J _{LZ}	[82] mm	
j _L	[75] mm	
a _{L min}	[20] mm	
a _{L max}	[61] mm	
a _{R min}	[20] mm	Distance
a _{R max}	[61] mm	
H ₁	[11.5] mm	
H ₄	[39.2] mm	
H ₅	[15] mm	
T ₅	[23.3] mm	
T ₆	[23.3] mm	
h	[53.8] mm	
h ₁	[28.8] mm	
Tol _{h₁}	[0.5] mm	Upper tolerance
Tol _{h₁}	[-0.5] mm	Lower tolerance
G ₂	[M16]	fixing screws
G _{2MA}	[220] Nm	maximum tightening torque
K ₁	[M14]	fixing screws
K _{1MA}	[340] Nm	maximum tightening torque
K ₃	[M14]	fixing screws
K _{3MA}	[220] Nm	maximum tightening torque
K ₆	[M14]	fixing screws
K _{6MA}	[130] Nm	maximum tightening torque
d ₁	[14.5] mm	
D ₂	[14.5] mm	
A ₃	[19.6] mm	position lubrication adapter
N ₃	[M6]	lubrication connector
A ₄	[19.6] mm	position lubrication connector
N ₄	[M6]	lubrication connector
J _{L6}	[68.1] mm	position lubrication connector
N _{2 max}	[6] mm	
J _{L5}	[48.8] mm	



Main dimensions

l_{\max}	[5,865] mm	Max length single piece guideway
H	[90] mm	height system
B	[170] mm	width carriage
L	[261.9] mm	overall length carriage

Technical data

C	[270,000] N	dynamic load rating
C_0	[640,000] N	static load rating
M_{0x}	[7,600] Nm	static moment rating about X axis
M_{0y}	[24,000] Nm	static moment rating about Y axis
M_{0z}	[21,500] Nm	static moment rating about Z axis

Related products

[RWU65-F-L]	Carriage
[TSX65-E]	Guideway