

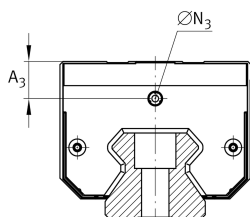
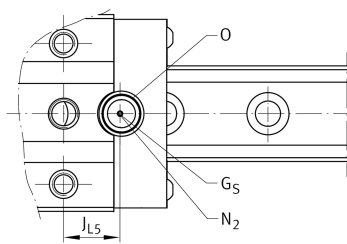
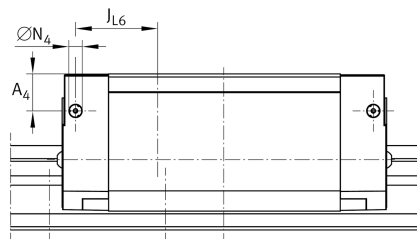
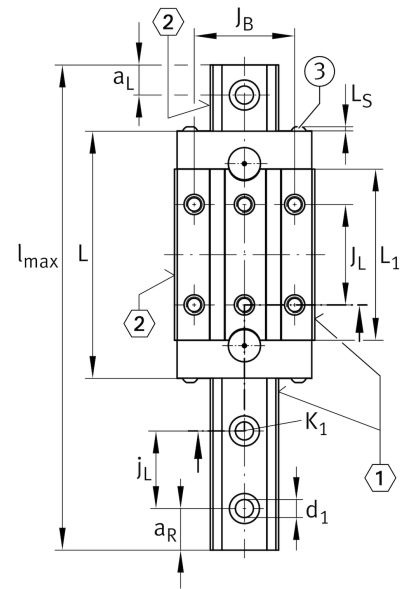
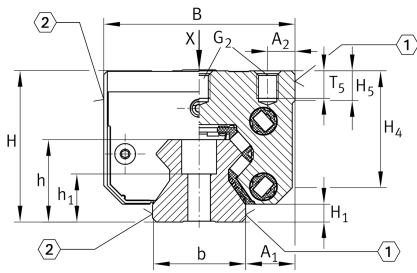
## RUE45-F-H

滚子单轨引导系统

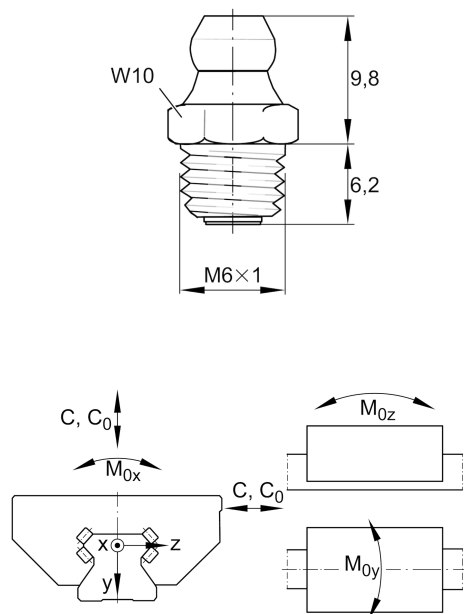
满装循环滚珠系统的高窄长滑块，用于直线循环滚珠轴承和导轨组件，用于润滑油和脂润滑

### 技术信息

## 安装尺寸



$A_1$	[20.5] mm	
$J_B$	[60] mm	
$b$	[45] mm	width rail
$Tol_b$	[-0.005] mm	Upper tolerance
$Tol_b$	[-0.035] mm	Lower tolerance
$A_2$	[13] mm	
$L_1$	[104.2] mm	
$J_L$	[60] mm	
$j_L$	[52.5] mm	
$a_{L\min}$	[20] mm	
$a_{L\max}$	[41] mm	
$a_{R\min}$	[20] mm	Distance
$a_{R\max}$	[41] mm	
$H_1$	[8.5] mm	
$H_4$	[52.4] mm	
$H_5$	[13.7] mm	
$T_5$	[12.5] mm	
$h$	[38] mm	
$h_1$	[19.5] mm	
$Tol_{h_1}$	[0.5] mm	Upper tolerance
$Tol_{h_1}$	[-0.5] mm	Lower tolerance
$G_2$	[M10]	fixing screws
$G_{2MA}$	[83] Nm	maximum tightening torque
$K_1$	[M12]	fixing screws
$K_{1MA}$	[140] Nm	maximum tightening torque
$d_1$	[10.6] mm	
$A_3$	[16.6] mm	position lubrication adapter
$N_3$	[M6]	lubrication connector
$A_4$	[16.6] mm	position lubrication connector
$N_4$	[M6]	lubrication connector
$J_{L6}$	[37] mm	position lubrication connector
$N_{2\max}$	[6] mm	
$J_{L5}$	[25.7] mm	
$G_5$	[M4x4]	
$O$	[10x1,5]	O-Ring DIN 3771



### Main dimensions

$l_{\max}$	[5,888] mm	Max length single piece guideway
H	[70] mm	height system
B	[86] mm	width carriage
L	[145.9] mm	overall length carriage

### Technical data

C	[92,000] N	dynamic load rating
$C_0$	[215,000] N	static load rating
$M_{0x}$	[1,899] Nm	static moment rating about X axis
$M_{0y}$	[4,255] Nm	static moment rating about Y axis
$M_{0z}$	[3,821] Nm	static moment rating about Z axis

### Related products

[RWU45-F-H]	Carriage
[TSX45-E]	Guideway