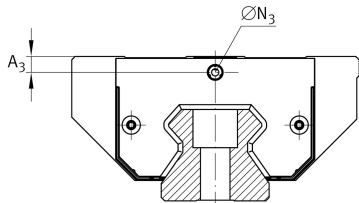
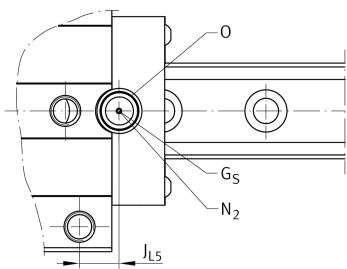
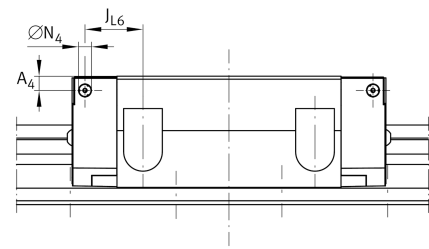
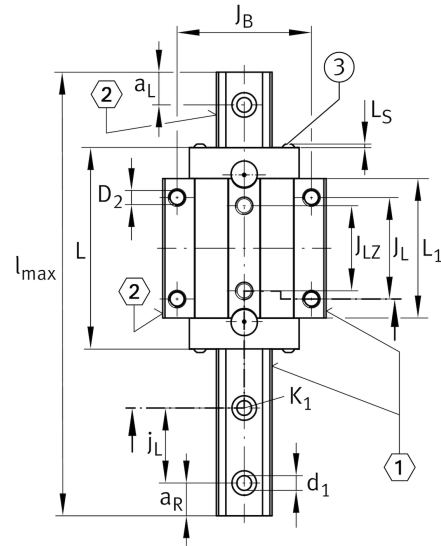
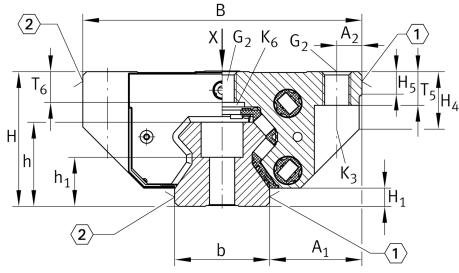


RUE45-F-L

滚子单轨引导系统

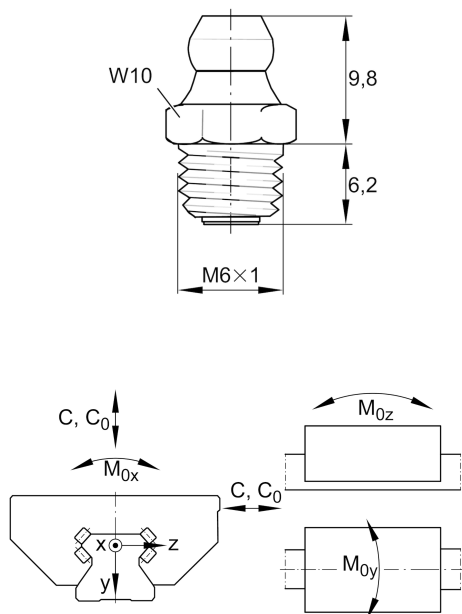
直线循环滚珠轴承和导轨组件，带有满装循环滚珠系统的长滑块，油润滑或脂润滑

技术信息



安装尺寸

| | | |
|------------------------------|-------------|--------------------------------|
| A ₁ | [37.5] mm | |
| J _B | [100] mm | |
| b | [45] mm | width rail |
| Tol _b | [-0.005] mm | Upper tolerance |
| Tol _b | [-0.035] mm | Lower tolerance |
| A ₂ | [10] mm | |
| L ₁ | [136.6] mm | |
| J _L | [80] mm | |
| J _{LZ} | [60] mm | |
| j _L | [52.5] mm | |
| a _{L min} | [20] mm | |
| a _{L max} | [41] mm | |
| a _{R min} | [20] mm | Distance |
| a _{R max} | [41] mm | |
| H ₁ | [8.5] mm | |
| H ₄ | [26] mm | |
| H ₅ | [8] mm | |
| T ₅ | [15] mm | |
| T ₆ | [13.2] mm | |
| h | [38] mm | |
| h ₁ | [19.5] mm | |
| Tol _{h₁} | [0.5] mm | Upper tolerance |
| Tol _{h₁} | [-0.5] mm | Lower tolerance |
| G ₂ | [M12] | fixing screws |
| G _{2MA} | [83] Nm | maximum tightening torque |
| K ₁ | [M12] | fixing screws |
| K _{1MA} | [140] Nm | maximum tightening torque |
| K ₃ | [M10] | fixing screws |
| K _{3MA} | [83] Nm | maximum tightening torque |
| K ₆ | [M10] | fixing screws |
| K _{6MA} | [48] Nm | maximum tightening torque |
| d ₁ | [10.6] mm | |
| D ₂ | [10.6] mm | |
| A ₃ | [6.6] mm | position lubrication adapter |
| N ₃ | [M6] | lubrication connector |
| A ₄ | [6.6] mm | position lubrication connector |
| N ₄ | [M6] | lubrication connector |
| J _{L6} | [43.2] mm | position lubrication connector |
| N _{2 max} | [6] mm | |
| J _{L5} | [31.9] mm | |



Main dimensions

| | | |
|------------|------------|----------------------------------|
| l_{\max} | [5,888] mm | Max length single piece guideway |
| H | [60] mm | height system |
| B | [120] mm | width carriage |
| L | [178.3] mm | overall length carriage |

Technical data

| | | |
|----------|-------------|-----------------------------------|
| C | [114,000] N | dynamic load rating |
| C_0 | [285,000] N | static load rating |
| M_{0x} | [2,503] Nm | static moment rating about X axis |
| M_{0y} | [7,263] Nm | static moment rating about Y axis |
| M_{0z} | [6,536] Nm | static moment rating about Z axis |

Related products

| | |
|-------------|----------|
| [RWU45-F-L] | Carriage |
| [TSX45-E] | Guideway |